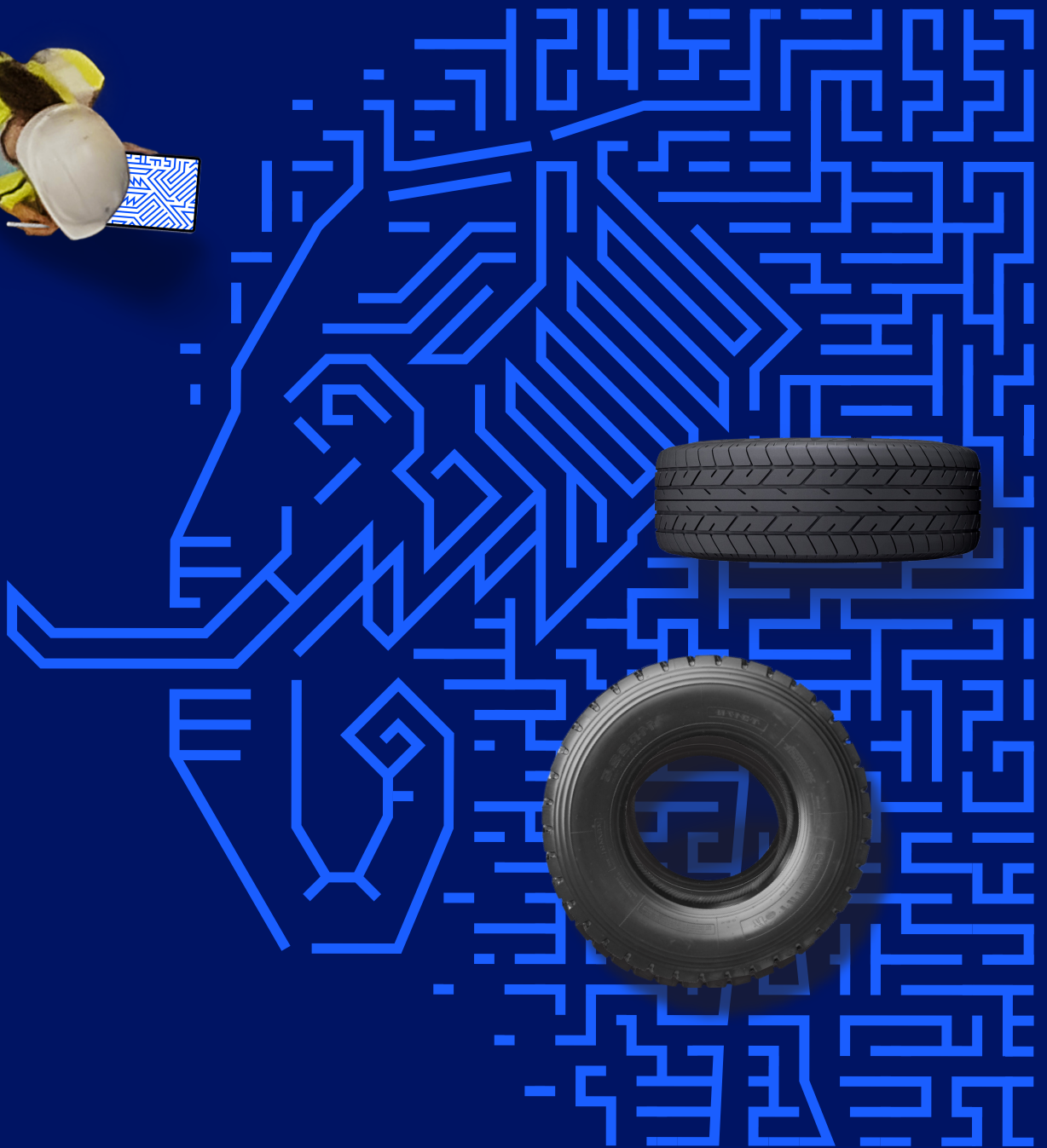


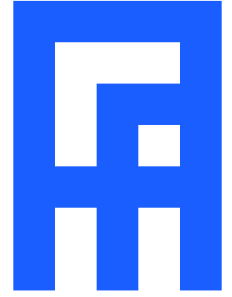
# LET'S TALK ABOUT THE ELEPHANT IN THE ROOM



BECAUSE IT WORKS

---

# ASSET AGENT is a simple, highly scalable solution tailor-made to boost productivity in non-conveyor belt mass production. Keep the flexibility of your production islands without the frustrations of manual processes.



## **Boost productivity**

Asset Agent will become an important part of your operations and boost productivity in non-conveyor belt mass production processes by up to 3%.

Built to integrate into your IT landscape, Asset Agent can make your life easy: no user training required, plug & play with ERP systems, such as SAP EWM, ease of installation and fully adaptable to your expansion plans.

## **Eliminate waste and save money**

Manual processes are often used for the transportation of assets such as raw materials or finished goods through numerous stages within the manufacturing process. Finding and directing those assets efficiently can be a constant challenge in a demanding and chaotic production environment. Done right, it saves time, increases machine utilisation and eliminates raw material wastage.

Successful and efficient production is all about visibility and avoiding mishaps that cost money and reduce productivity. Correct identification of all material throughout the entire production process eliminates the idle time and waste caused by incorrect deliveries. Possible delays are reduced to zero.

Asset Agent provides real-time visibility of every single piece of material in your production process giving valuable assistance to your workforce, without the need for high CAPEX

investments like automated guided vehicles (AGVs), automated guided carts (AGCs), or a fully automated factory.

## **Optimise process, stay flexible**

In production, standardizing processes leads to efficiencies. At the same time, ongoing innovation is a market demand and customers want individualised productions – flexibility is key. Thanks to the modular design of Asset Agent, optimizing processes while remaining flexible is possible.

Whether integrating automated and manual processes, applying specific consumption sequence procedures like FEFO, or analysing past operations, Asset Agents' real-time data will play an important role in keeping production on track.

## **Plug & Play**

Asset Agent easily scales to cover every material type in your production plant, providing information that can be accessed at any time, from any location. It works seamlessly with existing production management software via standard APIs and provides limitless possibilities to enhance your operations' efficiency.

The light infrastructure and low installation effort makes Asset Agent as easy to install as it is powerful – both inside and outside of buildings and massive structures. It turns a factory mired in manual processes into one of automated excellence and limits the human errors that reduce productivity.

## **KEY BENEFITS**

- **Makes your work smoother**
- **Gives you control**
- **Gives you valuable insight**
- **Makes your life easier**
- **Saves you money**

## **With insight comes visibility**

Now you can identify bottlenecks and fine-tune processes to increase efficiency and productivity. Asset Agent supplies you with real-time data providing visibility of all material, where they are, and when they are loaded, stored, or put into production.

Comprehensive reports provided by Asset Agent's software enables you to truly fulfil your role as a business process manager. Asset Agent helps you to gain insights for better efficiencies, eliminate waste and boost productivity to improve the way you produce your goods. Overall, your reputation as a knowledgeable manager will grow and positively impact your other projects.

**“Asset Agent helped us to increase productivity and efficiency without a process redesign.”**

**— Plant Manager of a multi-national tyre producer, USA**

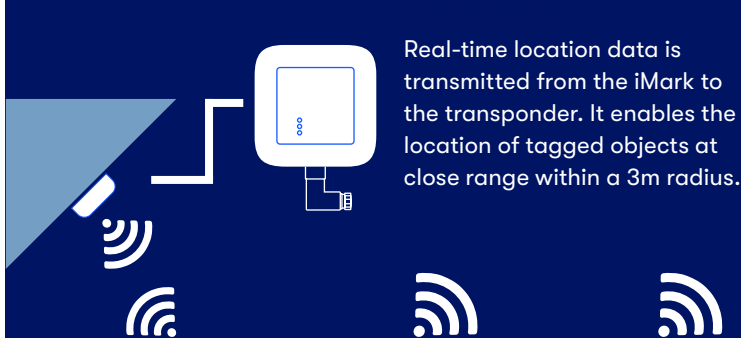
## ASSET AGENT in action



Asset Agent's RTLS software automatically process and filters data received from the network and sends data to third party ERP systems.



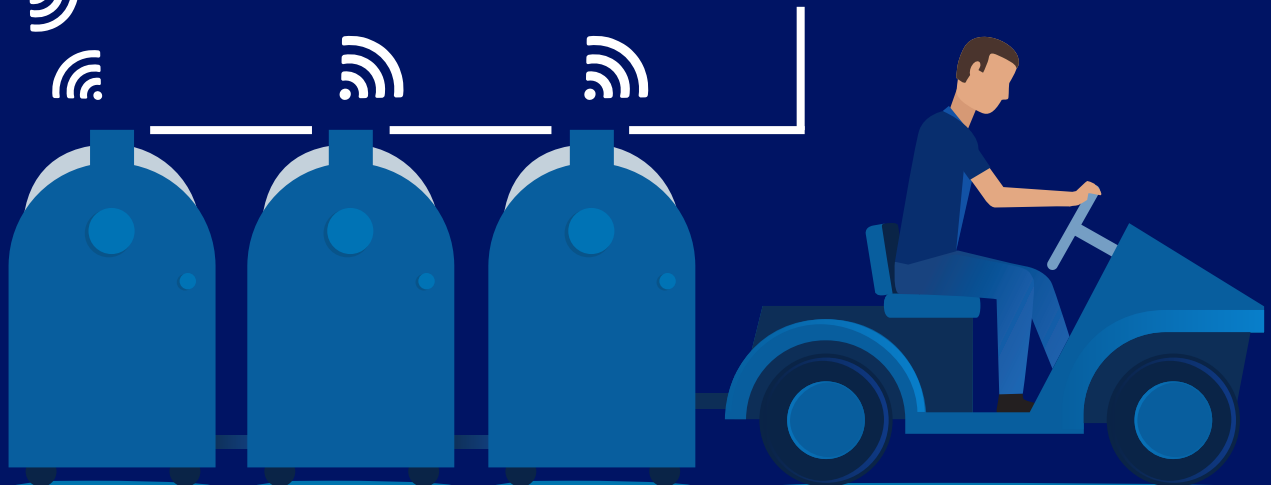
Robust and easy-to-install, the wireless reader transmits real time data via the transponder and into Asset Agent's RTLS system via LAN/WLAN.



Real-time location data is transmitted from the iMark to the transponder. It enables the location of tagged objects at close range within a 3m radius.



The transponder sends real-time location data to the reader. A 'Pick by Light' feature enables employees to easily locate the tagged object.



**“Asset Agent improved our resource utilisation. We can do more with less. In the end, it makes us more competitive in our market.”**

— Production Manager, central plant  
Europe of an international tyre  
manufacturer

## ABOUT IDENTEC SOLUTIONS

Among the potentially dizzying array of change and challenge it's reassuring to know that there are easy-to-use, robust products that are accessible everywhere, providing a common platform based on industry standards and driven by a detailed understanding of markets and customer needs.

That's what we've been creating at Identec Solutions for over 20 years. If you'd like to know more about our technical expertise, in-depth application of know-how and long standing experience, call us now on +(43) 5577 87387-0 or visit [identecsolutions.com](https://identecsolutions.com)

**BECAUSE IT WORKS**

## CONTACT US

### HEAD OFFICE

#### Identec Solutions AG

Millennium Park 2  
6890 Lustenau  
Austria

+43 5577 87387 0

**Fax:** +43 5577 87387 15  
[sales@identecsolutions.com](mailto:sales@identecsolutions.com)

### GERMANY

#### Identec Solutions

#### Deutschland GMBH

Löffelstraße 44  
70597 Stuttgart  
Germany

+43 5577 87387 0 (Head office)

### NORWAY

#### Identec Solutions Norway AS

Andøyfaret 15  
4623 Kristiansand  
Norway

+47 38 00 35 30

### USA

#### Identec Solutions, Inc

15150 Preston Rd  
Suite 300  
Dallas, Texas 75248  
USA

+1 972 535 4144

### AUSTRALIA

#### Identec Solutions Australia and New Zealand P/L

Riverview Business Park 72  
Maribyrnong St, Footscray,  
3011 Australia

+61 3 9396 8900

[IDENTECSOLUTIONS.COM](https://identecsolutions.com)